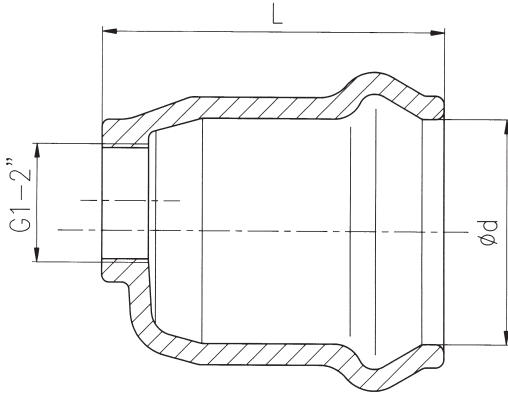




End Cap EX-KS

without thread outlet

Fig. 470



DN	d	L	Mass kg	
			Fig. 470	Fig. 471
50	63,6	122,0	2,0	1,8
65	75,6	130,0	2,6	2,5
80	90,7	140,0	3,4	3,2
100	110,8	144,0	4,7	4,6
125	140,9	167,0	6,1	6,0
150	161,0	176,5	8,9	8,9
200	226,4	210,0	17,0	17,4
250	281,6	241,0	26,8	26,7

End Cap EXI-KS

with thread outlet

Special bores possible

Fig. 471



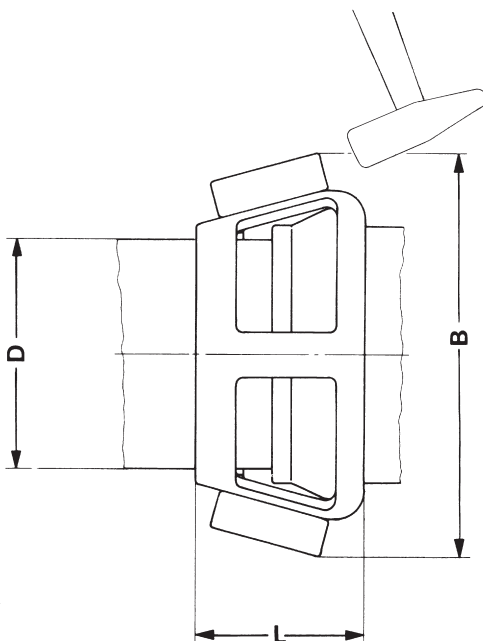
Restraint Clamp Fig. 472

Suitable for all fittings Fig. 410 to 471
and socket valves Fig. 130 and 135

Material:

of ductile cast iron GGG 400 – EN 1563

Clamp: Ms 58



DN	D	B	L	PN	Mass kg
50	63	180	91	16	2,50
65	75	200	96	16	2,80
80	90	220	103	16	3,00
100	110	240	110	10/16	3,50
125	140	280	123	10/16	3,90
150	160	300/320	140/152	10/16	6,00
200	225	380/400	165/185	10/16	9,50
250	280	455	195	10	13,50
300	315	495	200	10	16,30